

viveroo

free

Mounting options
Product dimensions
Exploded drawing
Technical data



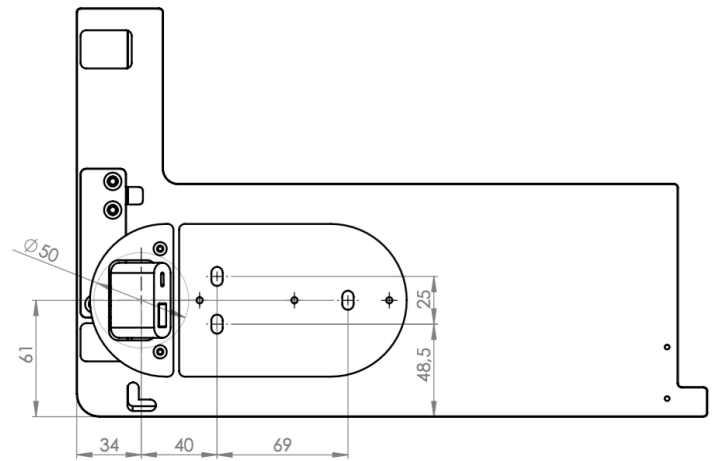
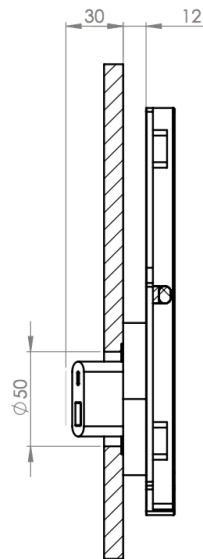
Install free in ... 1. Furniture

For installation in furniture, cabinets, wooden materials displays etc., in mm

Installation **without** flush mount box.

Direct screw-mounting.

Power supply: 12Vdc



MountingSet Furniture
Article 310300

incl. power supply and
mounting materials.

side view

from left to right: Mounting plate, free.

Please note: Use holesaw Ø50mm to put the connector through.

back view

The size of free varies depending on the iPad generation. Mounting plate is always the same, it allows you to change iPad generation easily. Scaled mounting template is available on www.viveroo.com

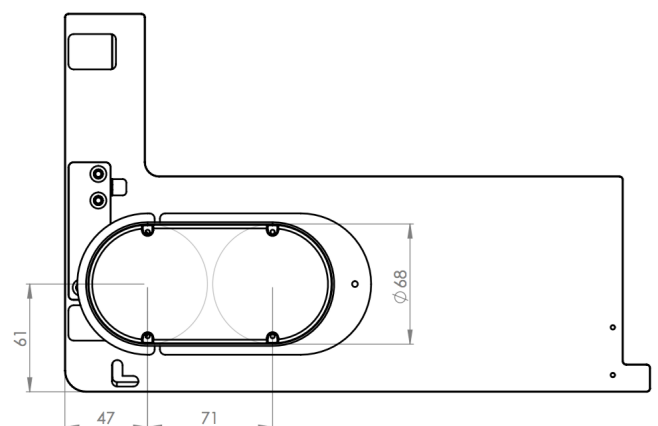
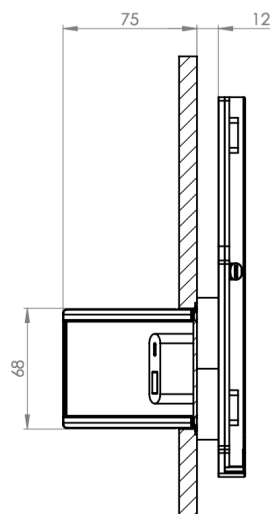
Install free in ... 2. Walls

Installation in drywall, stone or solid wall, in mm

Installation **with** flush mount box.

Attach free to the mounting plate. Flush mount box is behind mounting plate.

Power supply: 110-230Vac



MountingSet Inwall
Article 310200

incl. flush mount box, power
supply and mounting material

side view

from left to right: Flush mount box, mounting plate, free

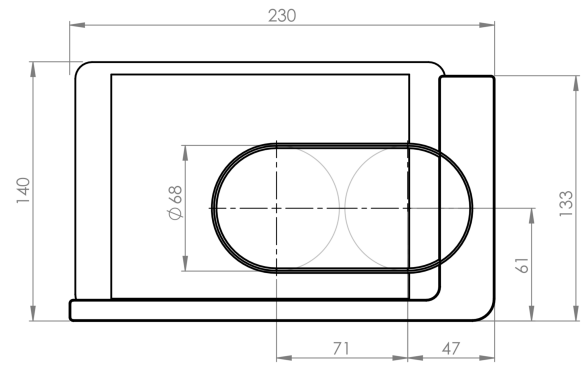
back view

The size of free varies depending on the iPad generation. Mounting plate is always the same, it allows you to change iPad generation easily.

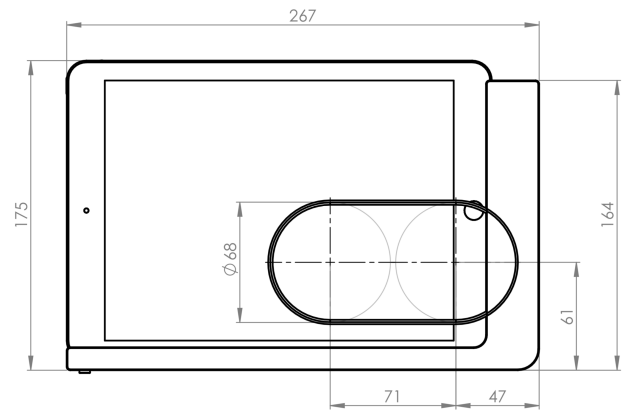
Product dimensions, in mm

free for ...

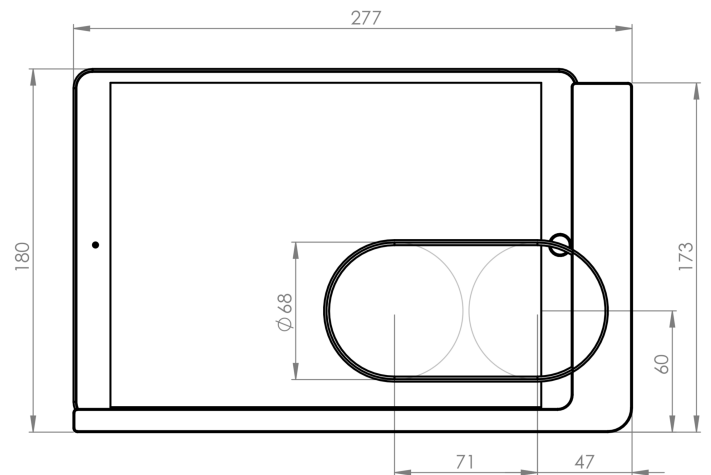
... iPad mini 4



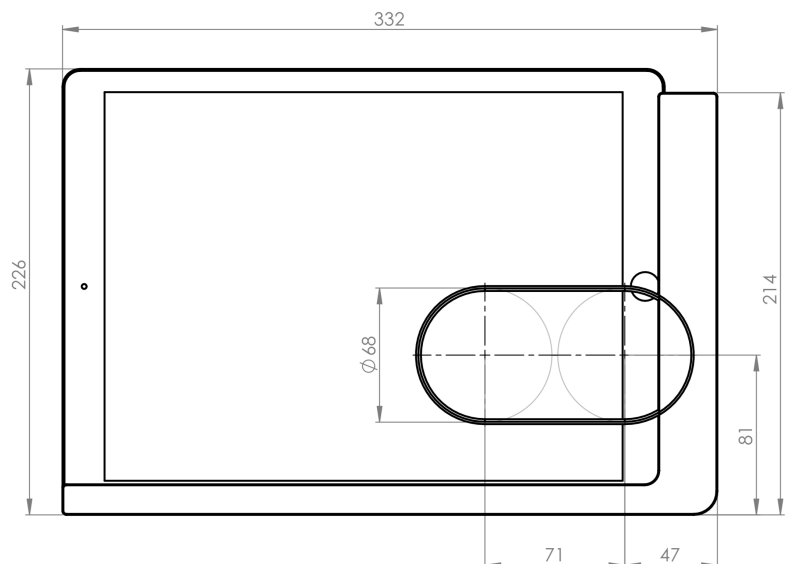
... iPad 9.7 inch (2017), iPad Air,
iPad Air 2 & iPad Pro 9.7 inch

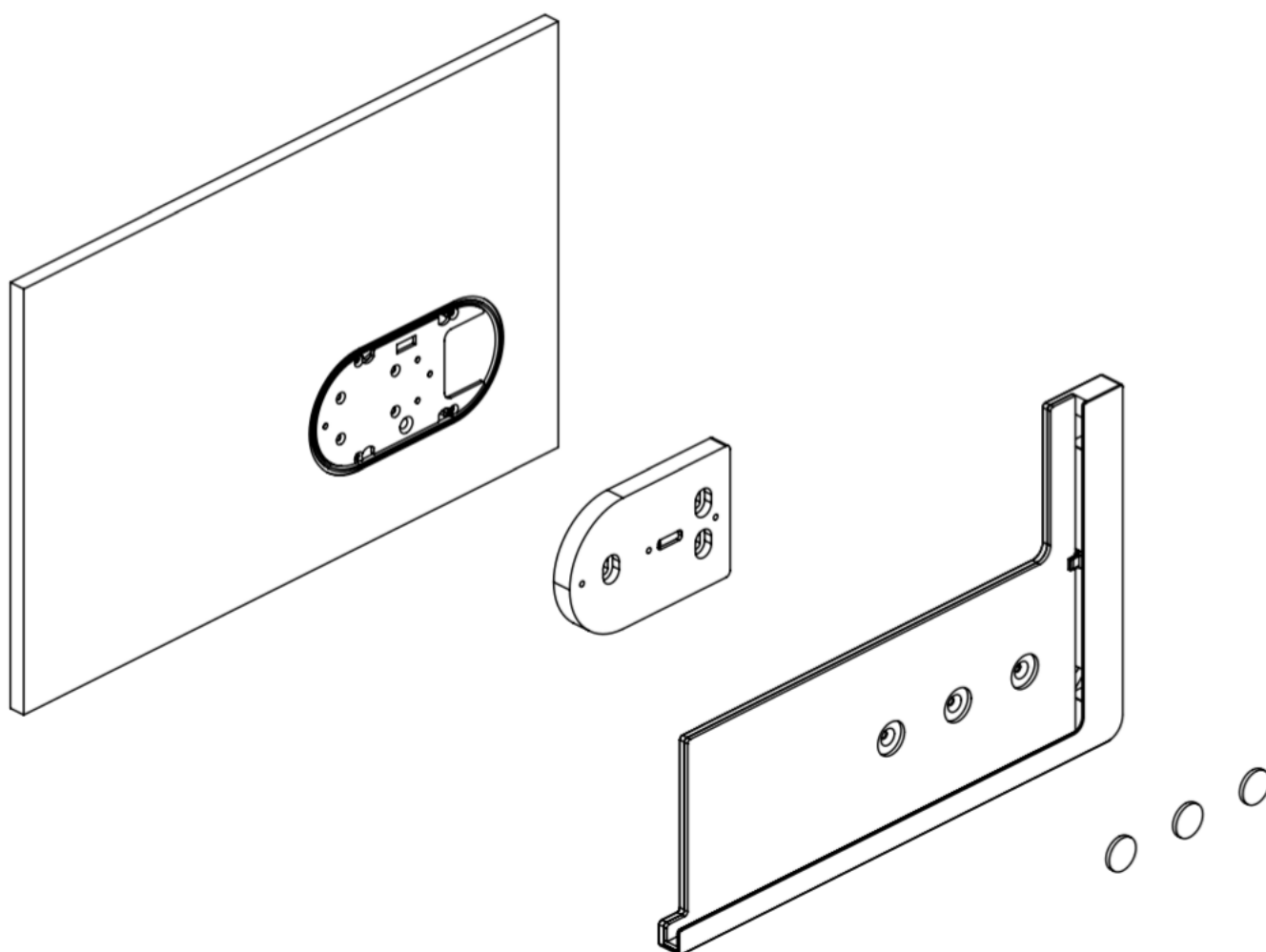


... iPad Pro 10.5 inch



... iPad Pro 12.9 inch





Technical data

free

Product contents	<ul style="list-style-type: none"> - User manual free - free <p>Please note! External cable, power supply and mounting screws are included in loop MountingSet.</p>
Compatibility	Electrical operation of free is permitted only in connection with free MountingSet and power supply and cable included in the MountingSet. Operation of free without a MountingSet will lead to immediate loss of guarantee and warranty.
Weight in gram	for iPad mini: 876 for iPad 9.7 inch (2017), iPad Air, iPad Air 2, Pro 9.7 inch: 924 for iPad Pro 10.5 inch: 952 for iPad Pro 12.9 inch: 1.010
Electrical connections	Power supply: 5,2 Vdc via Lightning connector Data interface: USB 3 connector
Disconnect from power supply	free may be removed from the power supply via the circuit breaker in the respective rooms.
CE & Co.	All frees have CE certification. free is quality "Made in Germany". We use only high-quality parts and components produced by market leaders. free customers are proud of their iPad Garage. *) Technical changes and mistakes are excepted.

MountingSet Furniture

Product contents	<ul style="list-style-type: none"> - Installation guide Furniture - USB Power Adapter with 1m Lightning charging cable - 2m Euro extension cable - true-to-scale drilling template
Electrical connections	Input voltage: 200-240 Vac, 50 Hz via Europlug Output voltage: 5,2 Vdc via Lightning connector

MountingSet Inwall

Product contents	<ul style="list-style-type: none"> - Installation guide Inwall - free flush-mount box with installation disc, incl. integrated level - Power supply (IN: 100-240 Vac, 50-60 Hz, OUT: 5,2 Vdc) installed on installation disc, pre-installed Lightning cable
Electrical connections	Power supply: 100-240 Vac, 50-60 Hz Power consumption: 18 watt