

# Installation guide

## viveroo one

viveroo **usa**



REV20191001

## ! Important

Please read the assembly instructions included carefully before installing the MountingSet. Please also read the one user manual completely before using your one. Please follow the instructions and recommendations to ensure proper use and maximum enjoyment.

## Safety information

one and all one mounting sets are intended for use in enclosed and dry living spaces.

The following conditions must be provided:

- Operating temperature between 0° C (32° F) and 35° C (95° F).
- Relative humidity (during use): 20 % to 90 %, non-condensing.
- No external environmental influences such as oil, chemicals, salt, extensive dust, etc.

Installation, service or repairs, if necessary, may only be performed by authorized persons.

The installer is responsible for selecting the proper mounting location and safe installation of one. This also applies to installation in movable parts, such as doors. The installer is responsible for performing and documenting all necessary safety tests.

All electrical installation work may only be conducted by authorized, trained electricians, always adhering to the general rules and regulations applying to electrical installation.

Should it become apparent that safe operation of one is not assured, then one must immediately be taken out of service and secured against potential misuse. If the one functions are limited, blocked or disabled, if an unusual odor is present, if noises such as scratching are audible or damage is visible, safe operation can no longer be guaranteed.



## Product contents

- Installation guide Inwall
- USB Power Adapter USB-C: 100-240Vac, 50/60Hz, PD 3.0, up to 18W
- For POE:
  - Lightning: IN: (IEEE 802.3af) 44-57V, 12W, OUT: 5V, 10/100 Data
  - USB-C: IN: PoE+ (IEEE 802.at), 25W, OUT: USB-C PD+Gigabit Data

## Measurements in millimeter

Measurements design cover one for ...

... iPad mini 4/5	225 x 143
... iPad 10.2 inch (09/2019), Air (2019), Pro 10.5 inch	267 x 164
... iPad Pro 11 inch	277 x 173
... iPad Pro 12.9 inch (2018)	275 x 178
	307 x 215

Depth 14

Size of opening (for flush-mounted box) elongated hole 68x139

Installation depth (for flush-mounted box) 75

## Weight in gram

one for ...

... iPad mini 4/5	740
... iPad 10.2 inch (09/2019), Air (2019), Pro 10.5 inch	866
... iPad Pro 11 inch	952
... iPad Pro 12.9 inch (2018)	1.118

## Electrical connections

Power supply 100-240 Vac  
50-60 Hz

Power consumption 12,5Watt - 18Watt,  
depending on iPad and power supply

## Removal from power supply

one may be removed from the power supply via the circuit breaker in the respective rooms.



Technical changes and mistakes are excepted.

Apple, iPad and Lightning are registered trademarks of Apple Inc.

## Installation with wallbox

- Step 1** one can be installed either in portrait or landscape position, it is your choice.

**For installation in landscape position:**

Make an elongated hole in the wall (68mmx139mm). Use a holesaw (two holes next to each other with 68mm diameter, center distance 71mm).

**For installation in portrait position:**

Use a holesaw and make two holes among each other with 68mm diameter, center distance 71mm.

The backside of the flush-mount box can be used as a template. The depth should be approximately 75mm.

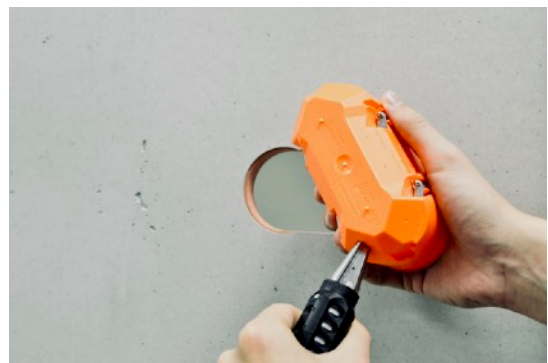
**! Important:** This installation guide shows the installation process for a drywall. Here one is installed in landscape position.



- Step 2** Cut a hole for the cable in the flush-mount box. Use the diagonal surfaces of the box for the cut. (See photo.) Cut the hole from the back side of the box. Make the hole correspond to the size needed for the cable.

If needed please prepare a second hole for the network LAN cable.

optional article: One with network connection via POE.  
Not for retrofit. Please order together with one.



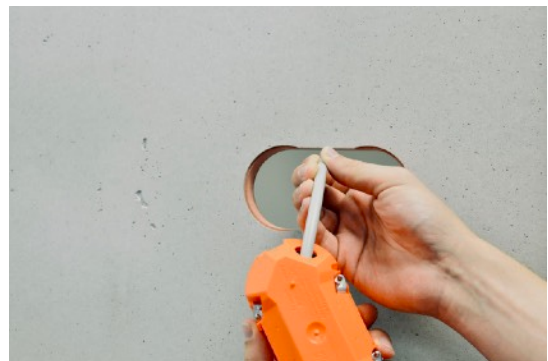
- Step 3** Insert the wallbox with the pre-installed installation disc into the opening in the wall. Pull 10-15 cm of the power cable through the opening.

**For free in landscape position:**

The integrated level will show you the 12 o'clock "UP" position. Adjust the flush mount box according to the level. (Final adjustments can be made at a later time.)

**For free in portrait position:**

The integrated level is in 3 o'clock position. Use an external level to align the box vertically.



- Step 4** **For drywall installation:**  
Fasten the flush-mount box to the wall.

**For stone or solid wall installation:**

Let the black installation disc mounted so that the flush mounted box is not deformed in any way.

**! IMPORTANT:** During installation, pay attention that the flush mount box is fastened parallel to the surface and is not shifted or offset in the wall.

**! IMPORTANT:** It is important that the flush mounted box is not deformed in any way. Do not use any foaming installation materials that may put pressure on the box and deform it.

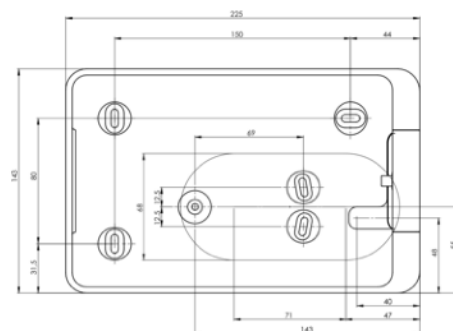


# Installation with wallbox Product dimensions and position of wallbox

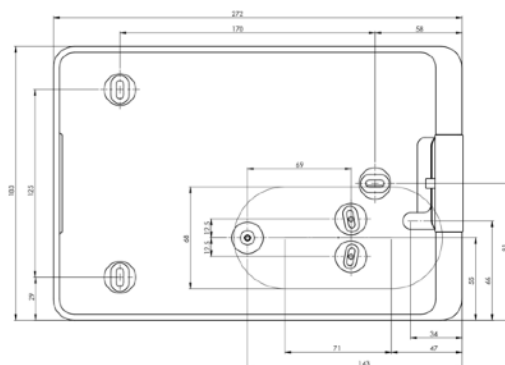
viveroo **usa**

one for ...

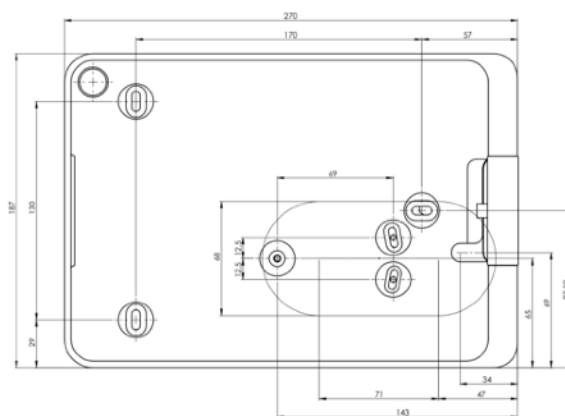
... iPad mini 4/5



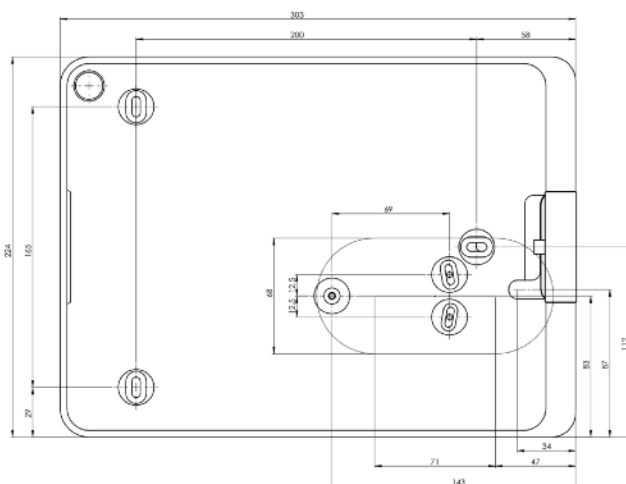
... iPad 10.2 inch (09/2019), Air (2019),  
Pro 10.5 inch



... iPad Pro 11 inch

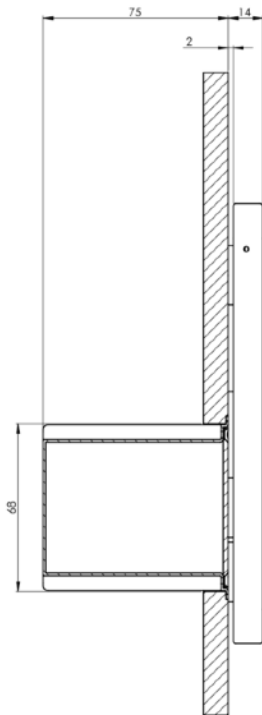


... iPad Pro 12.9 inch (3rd Generation 2018)



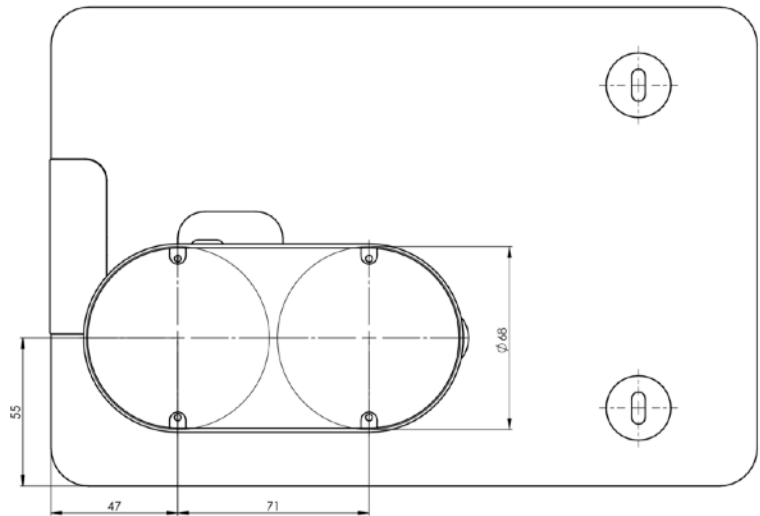
# Installation with wallbox (100-240V or PoE) (Technical drawing)

viveroo **usa**



## side view

from left to right: wallbox, wall, wall spacer, one

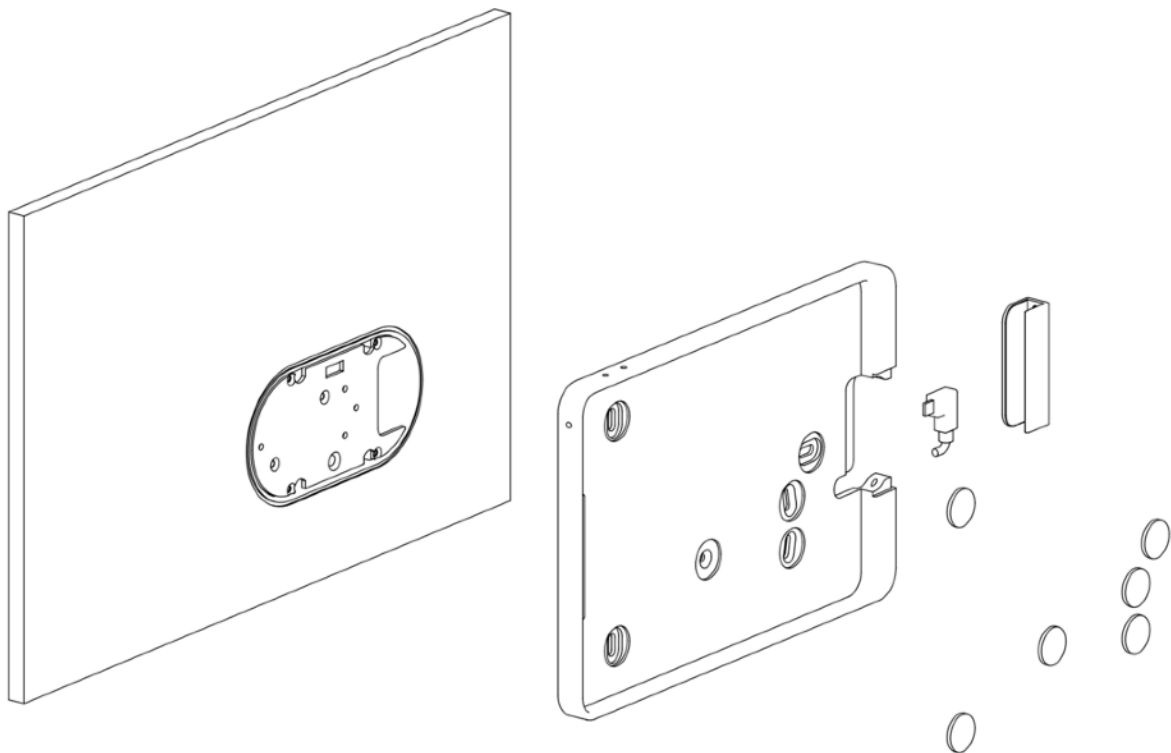


## back view

**! Attention: Measurements show free for iPad 9.7 inch.**  
Measurements for other generation on previous page.

The size of free varies depending on the iPad generation. Mounting plate is always the same, it allows you to change iPad generation easily.

Scale-ready drilling template at <https://www.viveroousa.com/technical>



## Installation direct mounting



The one can be attached directly to the wall via 3 points.

A distance from the wall ensures a secure hold and compensates for any unevenness. Use the enclosed dowels and screws for installation in concrete or solid wall.

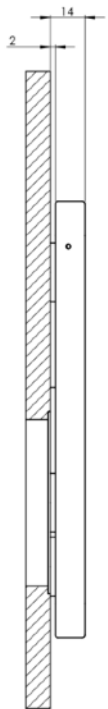
Use the drilling templates to optimally position the one against the wall.

Download at: <https://www.viveroousa.com/technical>



# Installation direct mounting (100-240V or POE) Technical drawing

viveroo **usa**

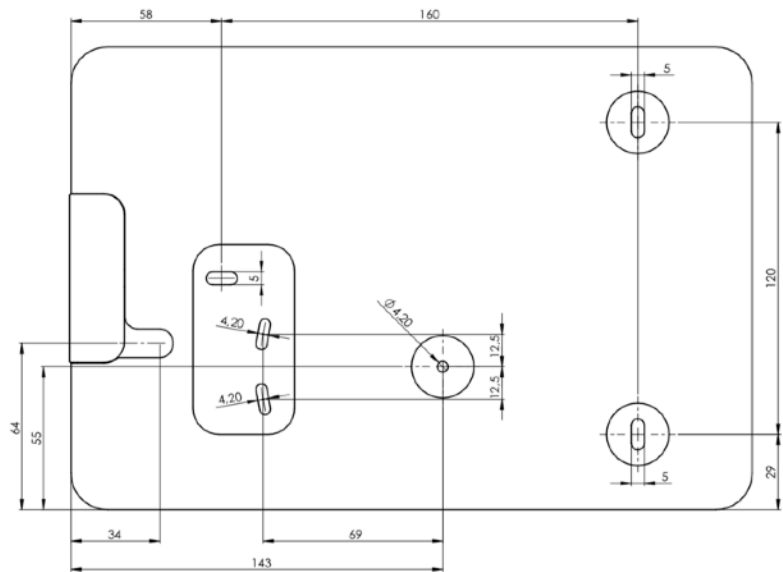


## side view

from left to right: wall, wall spacer, one

## Note:

Use holesaw 40mm to put the connector through.

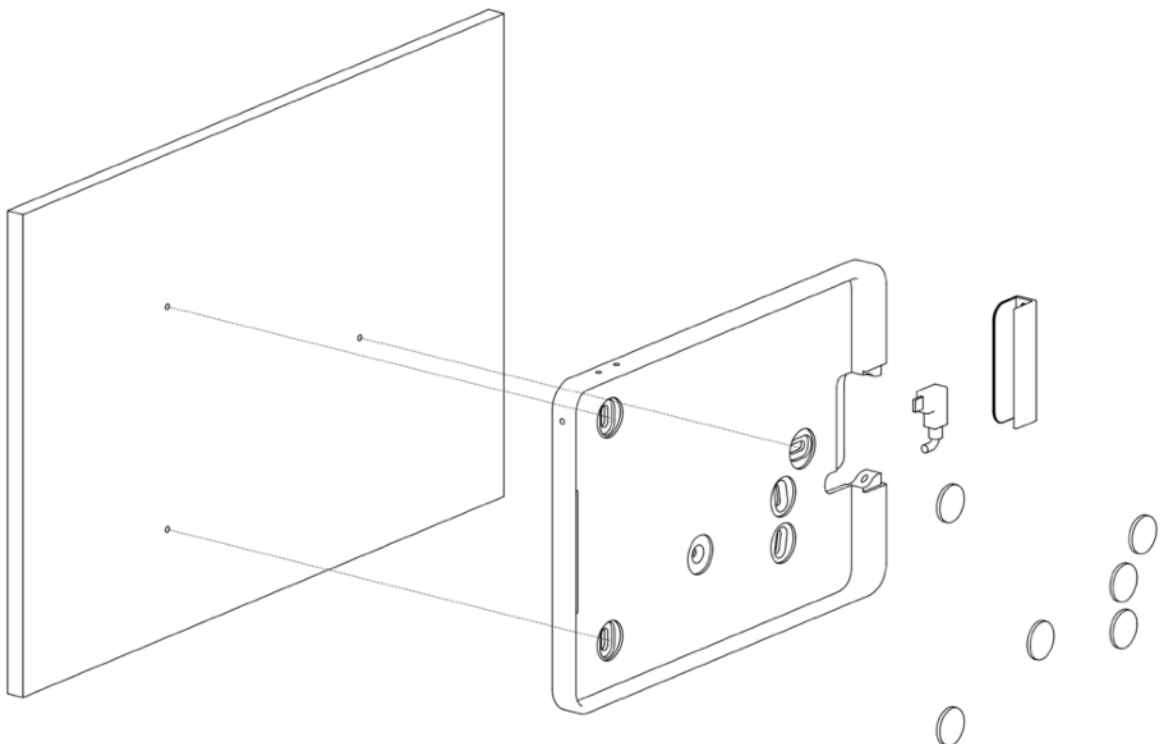


## back view

**! Attention: Measurements show free for iPad 9.7 inch.**  
Measurements for other generation on previous page.

The size of free varies depending on the iPad generation.

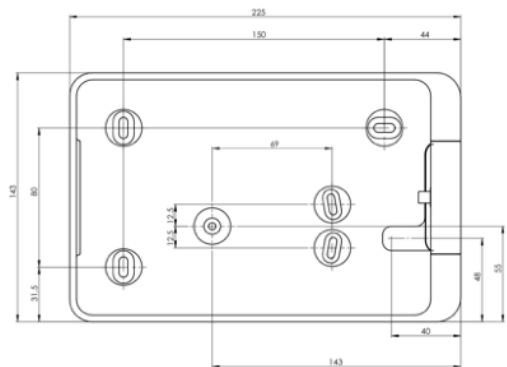
Scale-ready drilling template at  
<https://www.viveroousa.com/technical>



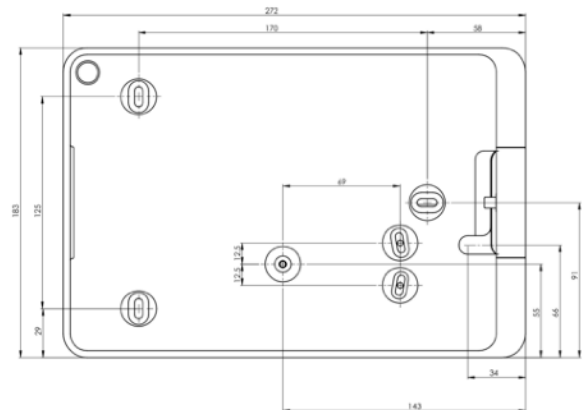
# Mounting Direct Screw Connection Product Dimensions



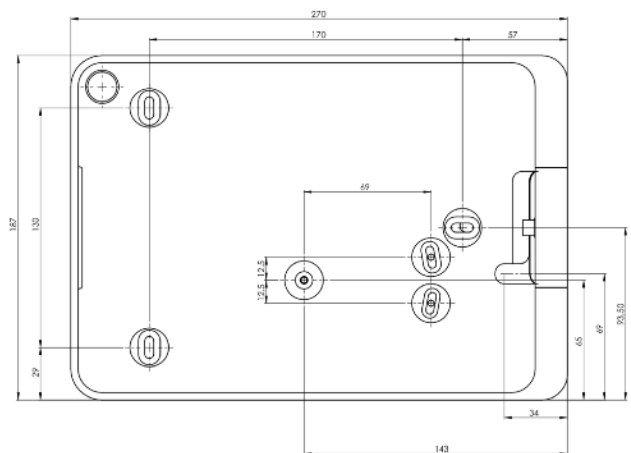
... iPad mini 4/5



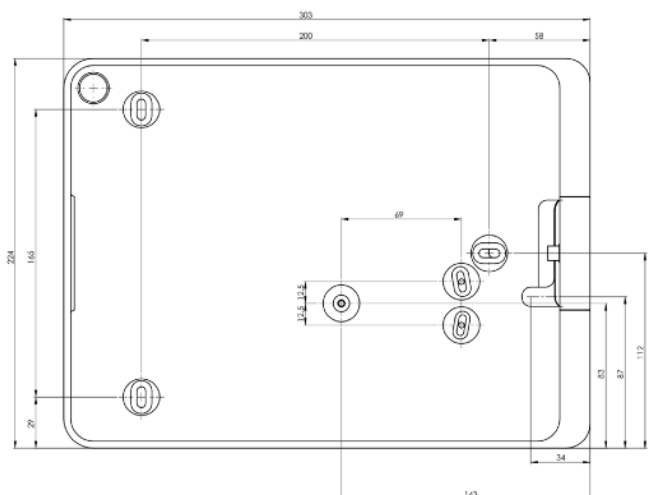
... iPad 10.2 inch (09/2019), Air (2019),  
Pro 10.5 inch

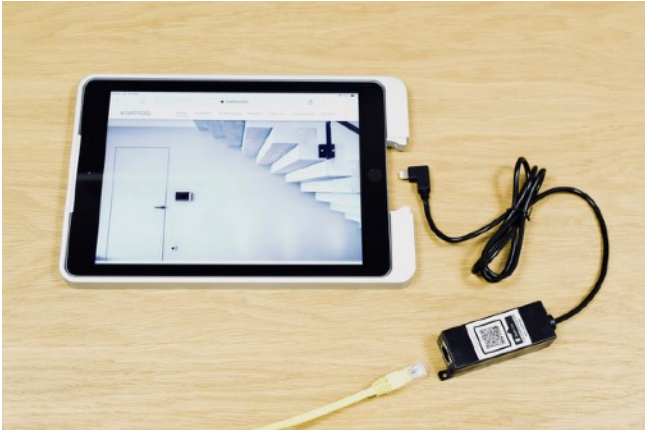


... iPad Pro 11 inch

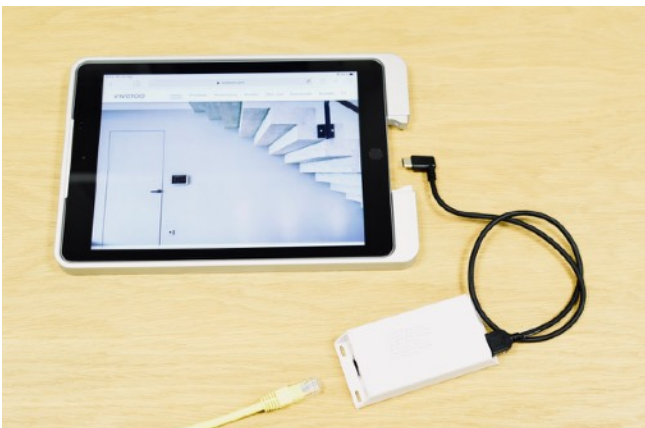


... iPad Pro 12.9 inch (3rd Generation 2018)





PoE Splitter for iPads with Lightning connector



PoE Splitter for iPads with USB-C connector

**Note:** Use orange wallbox and installation plate to fix viveroo free on the wall. Put the white PoE splitter outside the orange box as it can get very warm at high load. Please also note the enclosed instructions of the PoE Splitter. We recommend to put the orange wallbox into a bigger installation housing or into a cavity wall with enough space.

