

one

Mounting options
Product dimensions
Exploded drawing
Technical data

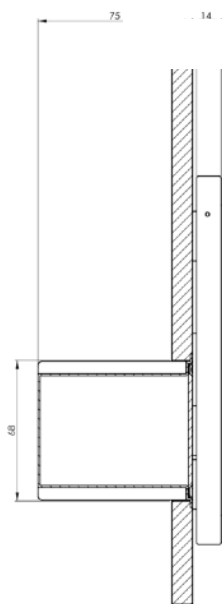


Mounting options: **with** wallbox

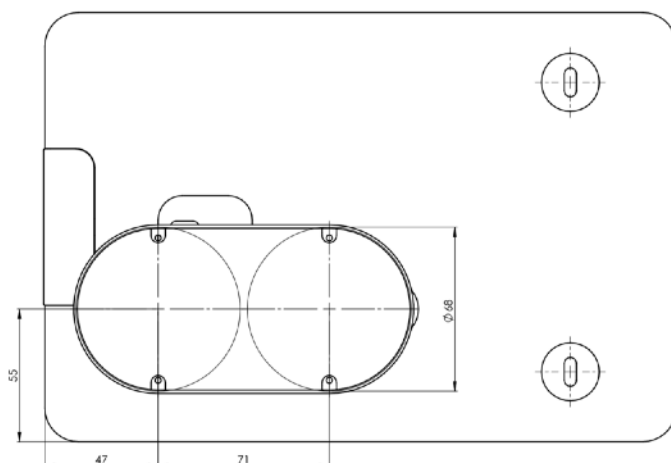
Installation in drywall, stone or solid wall etc.

Attach one to the wallbox.

Power supply: 100-240Vac or PoE (Power over Ethernet)



side view
from left to right: wallbox, wall, wall spacer, one



back view
! Attention: Measurements show one for iPad 9.7 inch. Measurements for other generation on following page.

The size of one varies depending on the iPad generation. Mounting plate is always the same, it allows you to change iPad generation easily.

Article:

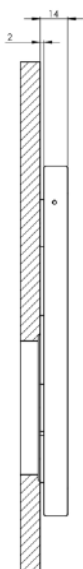
MountingSet Inwall
Incl. wallbox, power supply unit and mounting material

Mounting options: **without** wallbox

Installation in furniture, cabinets, wooden materials displays etc.

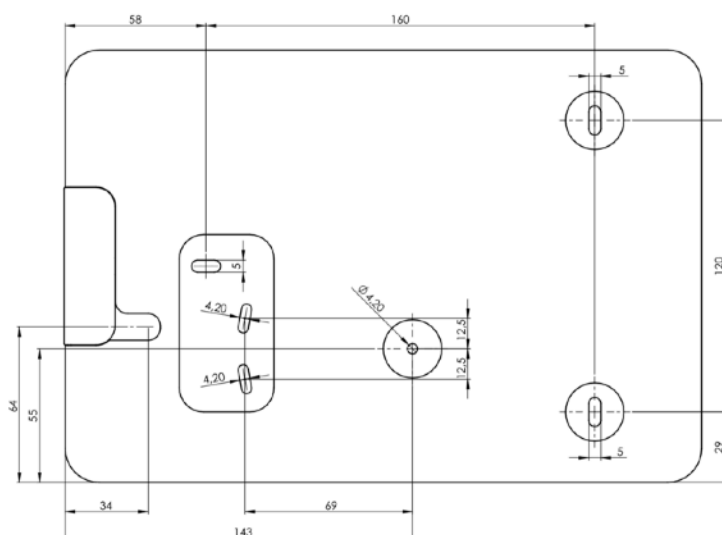
Direct screw-mounting.

Power supply unit:
USB-connector or PoE (Power over Ethernet)



side view
from left to right: wall, wall spacer, one

Please note:
Use holesaw $\varnothing 40\text{mm}$ to put the connector through.



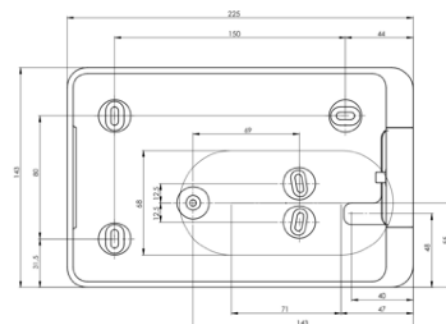
back view
! Attention: Measurements show one for iPad 9.7 inch. Measurements for other generation on following page.

The size of one varies depending on the iPad generation. Mounting plate is always the same, it allows you to change iPad generation easily.

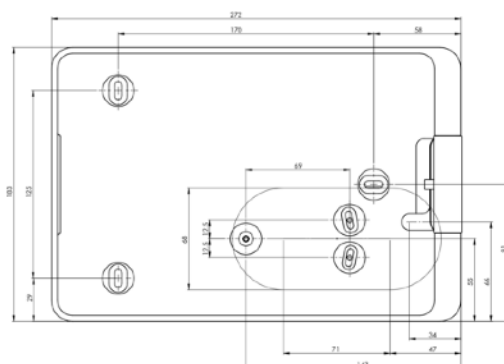
Article:

MountingSet Furniture
Incl. wallbox, power supply unit and mounting material

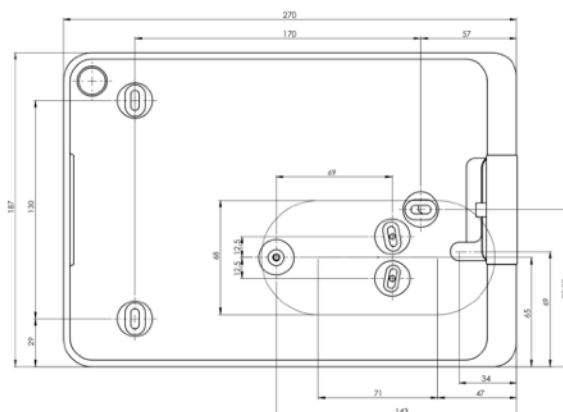
... iPad mini 4/5



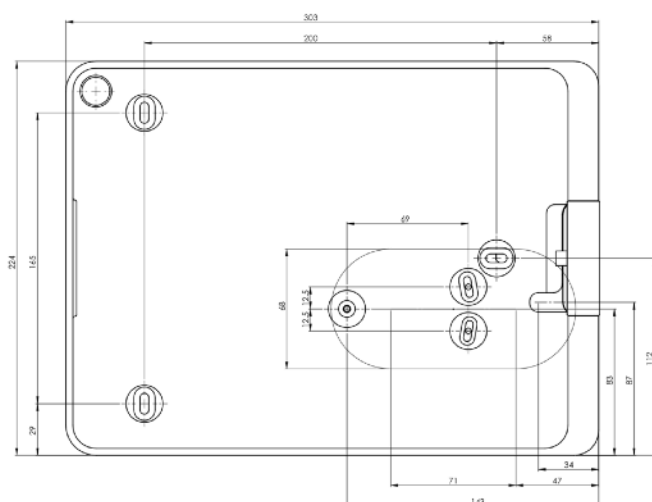
... iPad 10.2 inch (09/2019), Air (2019),
Pro 10.5 inch

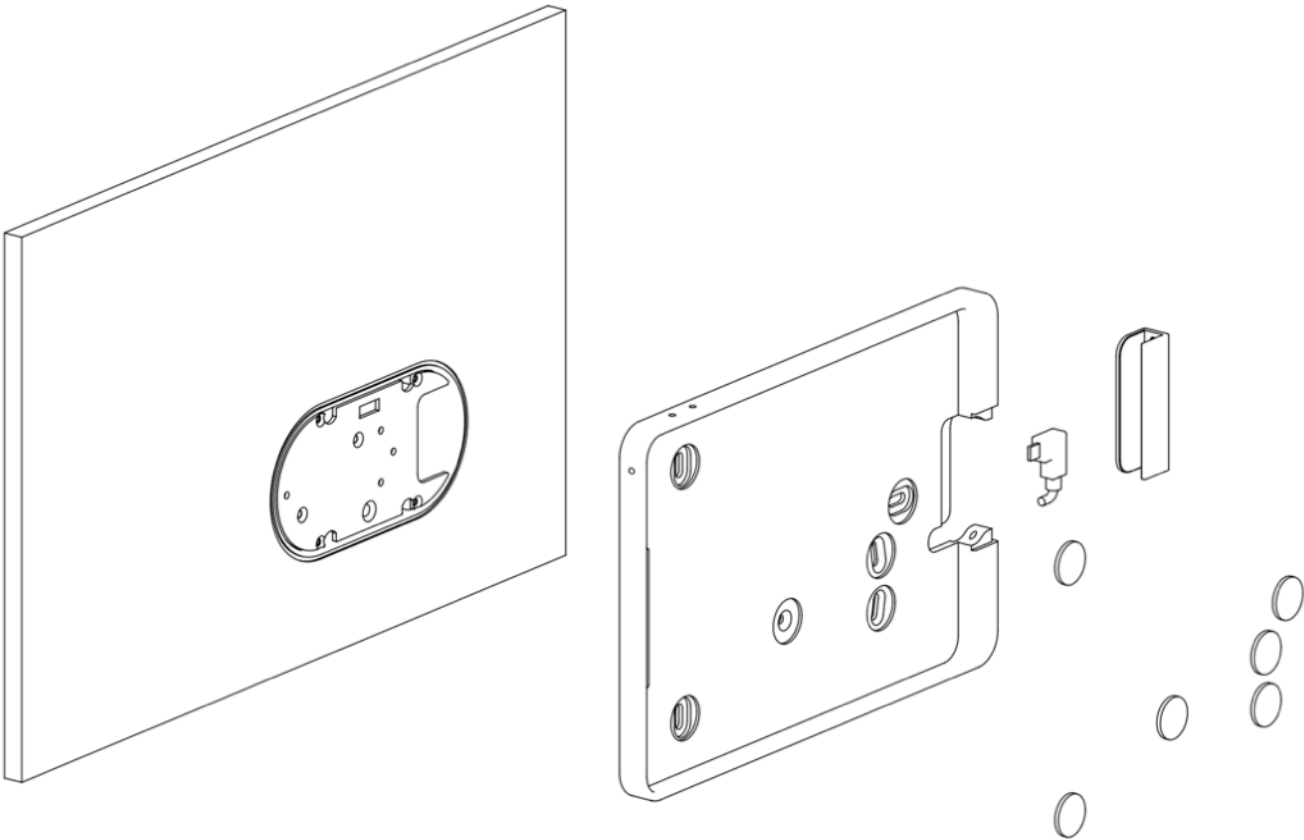


... iPad Pro 11 inch



... iPad Pro 12.9 inch (3rd Gen 2018)





one

| | |
|------------------------|--|
| Product contents | <div><div>- User manual one</div><div>- one</div></div> |
| | <p>Please note! External cable, power supply and mounting screws are included in MountingSet.</p> |
| Compatibility | <p>Electrical operation of viveroo products is permitted only in connection with viveroo MountingSet and power supply and cable included in the MountingSet. Operation of viveroo iPad mounts without a MountingSet will lead to immediate loss of guarantee and warranty.</p> |
| Weight | <div><div>iPad mini: 740 g</div><div>iPad 10.2 inch (09/2019), Air (2019), Pro 10.5 inch: 866 g</div><div>iPad Pro 11 inch: 952 g</div><div>iPad Pro 12.9 inch: 1.118 g</div></div> |
| Electrical connections | <p>5,2Vdc 2,4A via USB-A or 5Vdc 3A, 9Vdc 2A, 12 Vdc 1,5A via USB-C, depending on iPad.</p> |
| CE & Co. | <p>All viveroo products have CE certification. viveroo iPad mounts are quality "Made in Germany". We use only high-quality parts and components produced by market leaders. viveroo customers are proud of their iPad garage.</p> |